

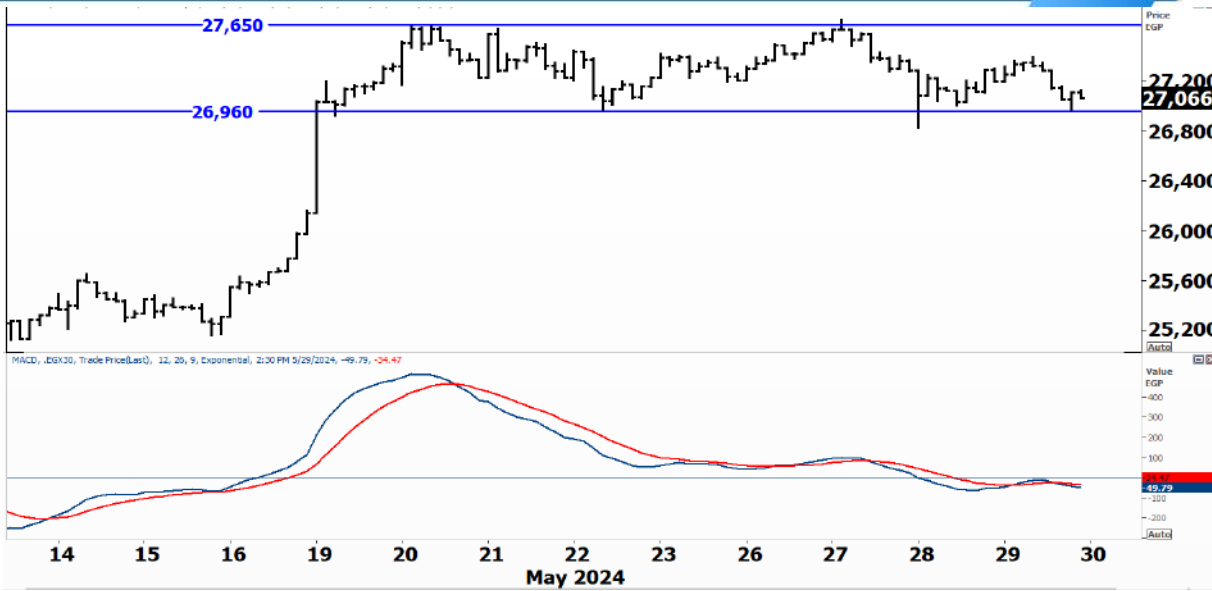


PIONEERSECURITIES

# TECH TO THE POINT

30-May- 2024

This report must be read with the disclaimer  
on the last page



Price EGP	
Last	27,089.68
High Today	27,391.88
Low Today	26,976.21
Volume	M
First Support	26,950
Second Support	26,000
First Resistance	27,700
Second Resistance	30,000
Stop Loss	
<b>HISTORICAL RETURN %</b>	
1 WEEK	0.21%
1 MONTH	5.28%
1 QUARTER	-5.68%
1 YEAR	59.28%
YTD	9.61%

**Analysis**

This is a 30-minutes chart of the EGX 30 and is important to watch. The sideways range lies between 26,950 and 27,700, the index has been moving between these two boundaries.

Yesterday, however, a decline took place before the index reached the upper boundary of this trading range. This is considered as a weakening signal and can lead to a break below our support that lies at 26,950. If the market declines today, after yesterday's lower high our stops will be hit which can lead to a stronger decline.

We will see whether the market will be able to rise today or not.

**EGX Small Caps Index/ EGX 70 Daily chart**


**Analysis**

Still hovering around its 6,000 area and did not confirm its breakout yet. A clear break above 6,000 will be bullish short-term and will lead the EGX 70 to higher levels.

Our short-term stop will be placed below 5,850; a break below this level will lead to a decline. For now, the EGX 70 is slightly outperforming its 30 counterpart.



## Resistance


**BTFH**  If the breakout above 3 is confirmed, we might see BTFH rising back towards the 3.5-3.6 area. Our formal and confirmed entry signal will be triggered at a breakout above 3.8. Short-term investors, however, can trade the stock from here if it confirms this breakout today.

## Support


No stocks broke their support yesterday


# Testing

## Support

**CCAP**  The 1.85-1.95 is a support range that should halt this decline. CCAP might rise from current levels to the 2.35-2.4 which might serve as resistance. However, a break below support will be bearish for the stock.

## Resistance

**BINV**  The stock witnessed an intraday breakout above 22.85 but closed below it. Volumes were high the past two sessions and a break above 22.85 is most probable. Our target will be set around 28.

**OIH**  Still unable to witness a strong rise as long as it is trading below the 0.37-0.38 range. If OIH clears this area to the upside, a strong rise will probably follow.

Symbol	S. Description	Last	Buying Area 1	Buying Area 2	Selling Area 1	Selling Area 2	Selling Area 3	Stop Loss
--------	----------------	------	---------------	---------------	----------------	----------------	----------------	-----------

*N.B. please note that the levels are too close as these trading opportunities only suit T+0 speculators*

*The prices that are accompanied by a green arrow in the above table show resistance levels. Thus, a break above these levels will pave the way to achieve one (or all) of the targets.*

*The area between buying area 1 and buying area 2 is a trading area.*

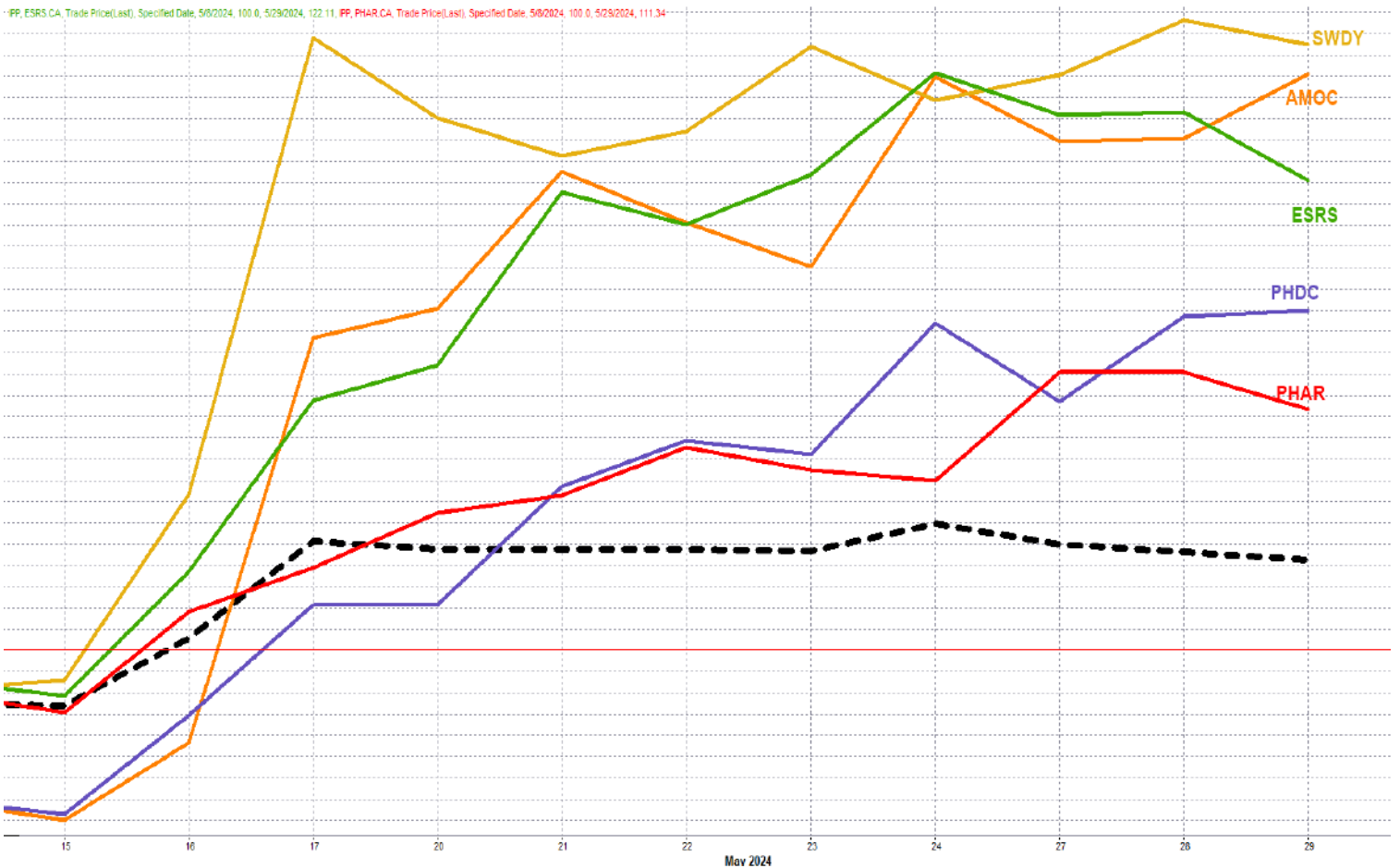
Yesterday's T+0/T+1 Trades



Symbol	Hit first Target	Hit Second Target	Hit Third Target	Hit Stop Loss	Triggered Buy	No Action

Top 5 Performers

EGX 30 Stocks; Past 2 Weeks



Symbol	S. Description	Last	Support 1	Support 2	Resistance 1	Resistance 2	Trend	Recommendation	Stop Loss/ Re-Entry
COMI.CA	COM INTL BK/d	76.55	75	72.7	77	82	↔	Hold	72.7
TMGH.CA	TALAT MOSTAFA/d	56.76	56	51	65	70.4	↔	Hold	51
EAST.CA	EASTERN CO/d	25.7	24.5	23	26.4	27.3	↔	Hold	23
ABUK.CA	ABU QIR FERTILIZERS /d	63.44	62	60	70	76	↔	Hold	60
MFPC.CA	MISR FERTILIZERS PRODUCTION CO	48	44	38	55	59	↔	Hold	44
SWDY.CA	ELSWEDY ELECTR/d	44.3	42.8	41.5	46	49	↔	Hold	41.5
ETEL.CA	TELECOM EGYPT/d	32.3	31	29	33.4	36	↔	Hold	29
HRHO.CA	EFG HERMES HOL/d	15.96	15.5	14.5	16.6	17.1	↔	Hold	14.5
ESRS.CA	EZZ STEEL/d	75.38	73	69	79	84	↑	Hold	69
EFIH.CA	E-FINANCE FOR DIGITAL&FINANCIAL INVESTEMENT	24.2	24.5*	22.2	26	27.6	↔	Hold	27.6
SKPC.CA	SIDI KERIR PET/d	29.4	28.5	27	31.7	34	↔	Hold	27
FWRY.CA	FAWRY FOR BANKING TECHNOLOGY /d	6.05	5.92	5.55	6.4	6.8	↔	Hold	5.55
ALCN.CA	ALEXANDRIA CONTAINER AND CARGO HANDLING CO	38	36.7	32	41	48	↔	Hold	32
EKHO.CA	EGYPT KUWAIT H/d	0.778	\$0.77	\$0.73	\$0.80	\$0.825	↓	P.Sell	0.8
ADIB.CA	ABU DHABI ISLAMIC BANK EGYPT	38.88	38	35	42.5	45	↔	Hold	35
EFID.CA	EDITA FOOD INDUSTRIES	29.59	28.8	26	32	35	↔	Hold	26
AMOC.CA	ALEXANDRIA MINERAL OILS CO/d	9.09	8.38	8.15	9.2	9.5	↔	Hold	8.15
BTFH.CA	BELTONE FINANCIAL HOLDING	3.06	2.85	2.7	3.08	3.24	↔	Hold	2.7
EKHOA.CA	EGYPT KUWAIT HOLDING CO	31.82	30	29.2	33.8	36	↔	Hold	30
ORWE.CA	ORIENTAL WEAVERS /d	19.77	19	18.2	20.7	21.5	↔	Hold	18.2
ORAS.CA	ORASCOM CONSTRUCTION	269.7	260	240	283	295	↔	Hold	240
MASR.CA	MADINET MASR FOR HOUSING	3.66	3.5	3.28	3.96	4.18	↔	Hold	3.28
HELI.CA	HELIOPOLIS/d	10.63	9.9	9.4	10.6*	11.27	↔	Hold	9.4
JUFO.CA	JUHAYNA FOOD INDUSTRIES	16.2	15.5	14.6	16.8	17.7	↔	Hold	14.6
ORHD.CA	ORASCOM DEVELOPMENT EGYPT	11.25	10.6	9.8	11.7	12.9	↔	Hold	9.8
GBCO.CA	AUTO GHABBOUR /d	11.61	10.85	10.3	11.77	12.5	↔	Hold	10.3
PHDC.CA	PALM HILL DEV /d	3.77	3.48	3.25	3.85	4.13	↔	Hold	3.2
CCAP.CA	CITADEL CAPITA/d	2.03	1.97	1.86	2.32	2.55	↔	Hold	1.97
PHAR.CA	EGYPTIAN INTERNATIONAL PHARMACEUTICAL	38.4	37	35.5	40.5	43.6	↔	Hold	35.5
SUGR.CA	DELTA SUGAR COMPANY	57.56	55.2	51	59.8	64	↔	Hold	51
ISPH.CA	IBNSINA PHARMA CO	2.64	2.44	2.31	2.75	2.95	↔	Hold	2.31

## Guidelines



**Bullish**



**Bearish**



**Neutral**

Trend: (Upgrade, Downgrade): Change in trend color refers to upgrade or downgrade in the trend relative to the previous trend direction. E.g. change from "↓Down" to "↔ Flat" is considered an upgrade and vice versa.

- Buy: Buy the full position.
- P.Buy: Buy portion of a position
- Hold: Don't Buy or sell.
- P.SELL: Sell portion of a position.
- Sell: Sell the full position.
- Stop Loss: Completely exit the position (or) Re-entry in cases of Selling.

## Disclaimer

This report has been prepared according to the general data available for public, in accordance with the professional standards applied in that career to the best knowledge of the reporter. The recommendations mentioned are a guiding tool representing a professional opinion, and not granting any profits, consequently it is not obligatory for our valued customers and investors. Pioneers Securities©, Egypt shall not be liable for any direct, indirect, incidental, or consequential damages, including limitation losses, lost revenues, or lost profits that may result from these materials. Republishing this report or any of its contents is subject to prior approval; referring to the source is a must. Opinions expressed are subject to change without notice and may differ or be contrary to the opinions or recommendations of Pioneers Securities©, Egypt Research or the opinions expressed by other business areas or groups of Pioneers Securities©, Egypt as a result of depending solely on the historical technical behavior (price and volume).

## Technical Analysis Department

### Saleh Nasser

Chief Technical Strategist

### Ahmed Hassan

Senior Technical Analyst

### Dina Fahmy

Senior Technical Analyst

### Tips on reading the report

The first page includes an analysis of two major indices in the Egyptian Stock Market; the norm is that we will analyze both the EGX 30 and 70, but sometimes we will compare the EGX 30 to its 50 counterpart if there is important information in this comparison. We also use the Hermes Last Index interchangeably with the EGX 30. The .HRMSL index has an important edge; it uses last prices instead of VWAP. First thing our clients should do is to read the indices analysis carefully to have a clear understanding on our overall view.

The second page includes stocks that broke out beyond their resistance levels, and those that violated their support levels. It also includes stocks that are testing their support levels and those that are testing their resistance. This analysis is important and it is the core of our recommendations. It is important to note though that not all stocks that are testing their support levels are bullish, and not all that are testing their resistance levels are bearish. To make it easier for our clients, we have placed a bull face 🐂 if we consider the stock under study bullish, and a bear face 🐻 if we consider it bearish. We also added a big bullet 🟩 if we are neutral .

It is important to note that you might find a stock that we consider bullish in our analysis (in the breakouts/testing section) but it remains as a hold or partial sell in the table. The conflict here is that the table is more conservative. This will not be an issue with our clients, because our analysis will explain why we are being bullish/bearish on the stock.